

Precision is our passion



Design: F2Design, www.f2-d.de

It is always our desire to meet your individual demands in the shortest time to produce optimum quality products. We accomplish this with the assistance of the latest CAD/CAM technology which reads your requests digitally and anatomically and then transforms them into molds and casts. Our custom designed laser and milling technique always achieves a product of exactness with unique precision.

We cover a wide variety of procedures, such as single unit crowns, bridges and partials, telescopic onlays, as well as full mouth reconstructions.

Due to our innovative technique, we are able to produce so called model castings. This new software enables us to manufacture lower and upper metal partial prosthesis. Our high end metal alloy is comparable to industrial strength steel and therefore superior to all other dental castings.

Our advanced technology, with a laser process specifically designed for dental procedures, guarantees a fit with utmost precision and absolute perfection in a speedy manner (turn around time is 24 hours).

CADdent® GmbH
Laser and milling center Augsburg

Zollernstraße 20 • 86154 Augsburg
Telephone: +49 (0)821.59 99 96 50-0
Fax: +49 (0)821.59 99 96 50-45
Email: augsburg@CADdent.eu
Internet: www.CADdent.eu

CADdent® GmbH
Laser and milling center Munich

Schuegrafstraße 9 • 81245 Munich
Telephone: +49 (0)89.889 87 86 48
Fax: +49 (0)89.889 87 86 49
Email: muenchen@CADdent.eu
Internet: www.CADdent.eu

PRODUCT INFORMATION

Laser technology



CADdent® LASER AND MILLING CENTER

Applications

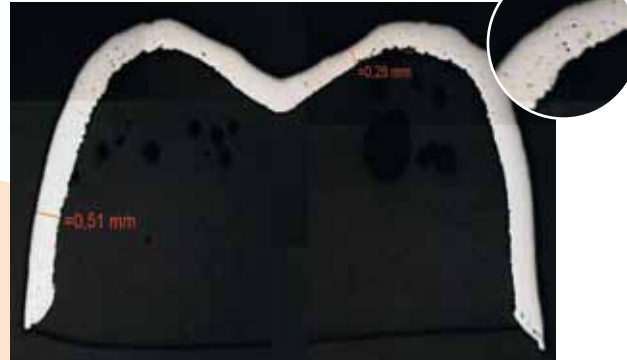
Laser technology

Accuracy

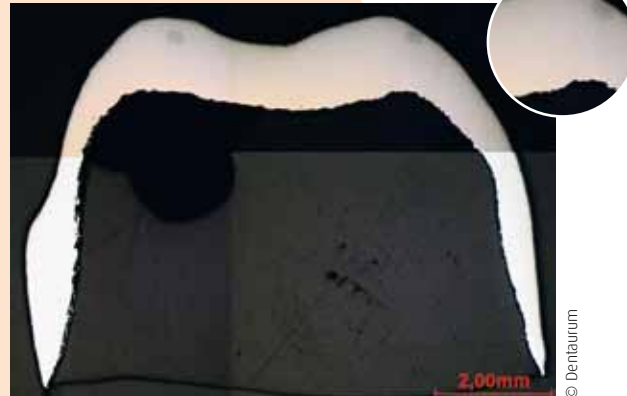


Details

Traditional Laser with porosities



OUR UNIQUE LASER TECHNOLOGY - without porosities



Precision metal structure with our special laser technology using industrial strength steel.



Implant bridge



Metal framework