

Price list with file



LASERMELTING



MILLING



3D-PRINTING



SERVICE

Table of contents



LaserMelting	4 - 13
Cobalt-chrome (CoCr)	5 - 7
Titanium	7 - 8
Partial framework (RPD)	9
Tertiary structure / Overdenture	10
Orthodontics	11 - 13

HYBRID Production	14 - 17
Secondary structures	15
Occlusal directly screw-retained works	16 - 17

Milling	18 - 45
Zirconia multilayer	19
Zirconia 3D	20 - 23
Zirconia translucent	24 - 25
Zirconia opaque	26 - 27
Lithium disilicate / Feldspar ceramic / Composite	28 - 31
Polymer	32 - 34
Splint	35 - 37
Cobalt-chrome (CoCr)	38
Titanium	39
Abutment	40 - 43
Wax	44
Your partner for reliable	45

3D-Printing 46 - 49

Model / Impression tray	47
Surgical guide template	48
Casting 3D	49

Service 50 - 59

Service options	51 - 53
Production times	54 - 57
Shipment	58
Payment options / Further information	59



CADdent®

CADdent® GmbH
Max-Josef-Metzger-Str. 6
86157 Augsburg | Germany

Customer Care

Phone: +49 821 5999965-0
Mo. – Th. 8 a.m. – 6 p.m.
Fr. 8 a.m. – 4 p.m.
uk@caddent.eu



LASERMELTING



Experience, Quality and Precision

We are among the pioneers in selective laser melting (SLM) - a process that we just call LaserMelting. As a leading provider, we supply customers all over Europe with basic prosthetic

products up to complex structures in orthodontics. Our LaserMelting process implements any digitally created 3D design in cobalt-chrome (CoCr) and titanium with high precision.



Basic Cobalt-chrome (CoCr) Dentaurum remanium® star



Indications

- fully anatomical crown and splinted crown up to 2 units
- crown and splinted crown up to 2 units for veneering

Technical details		Composition in percent	
CTE (25 - 500 °C):	14,1 * 10 ⁻⁶ K ⁻¹	Co	60,5
Modulus of elasticity:	230.000 N / mm ²	Cr	28,0
Density:	8,6 g / cm ³	W	9,0
Yield point:	620 MPa	Si	1,5
Tensile strenght:	845 MPa	Mn, N, Nb, Fe	< 1,0
Elongation at break:	10,2 %		

With supports (Basic)



LaserMelting	file
	with supports
per unit	6,49 €



Cobalt-chrome (CoCr) Dentaurum remanium® star



Indications

- Fully anatomical crown and bridge up to 16 units
- Crown and bridge up to 16 units for veneering
- Telescopic reconstruction
- Implant-supported superstructure
- Bar

Technical details

CTE (25 - 500 °C):	14,1 * 10 ⁻⁶ K ⁻¹
Modulus of elasticity:	230.000 N / mm ²
Density:	8,6 g / cm ³
Yield point:	620 MPa
Tensile strenght:	845 MPa
Elongation at break:	10,2 %

Composition in percent

Co	60,5
Cr	28,0
W	9,0
Si	1,5
Mn, N, Nb, Fe	< 1,0

Supports
not grinded



Supports
grinded

LaserMelting	file	
	grinded	not grinded
per unit	13,99 €	9,99 €
Retentions per two units	13,99 €	9,99 €
Attachment per two units	13,99 €	9,99 €
Service	file	
	grinded	not grinded
Standby ^{1,3}	-2,00 €	
OneDay ^{1,3}	-	+4,90 €
Goodwill insurance ^{1,3}	+0,99 €	
Additional weight ^{2,3}	+5,00 €	
Repair of file ^{1,3}	+5,00 €	
Elaboration of occlusal surface ³ (Additional expenditure: for occlusal surfaces, cut-back, etc.)	+7,50 €	-

¹ Explanation on pages 53 - 55

² Explanation on page 61

³ per unit



Delivery options



With supports (Basic)

In addition to the extra occlusal layer, the support structures also remain on your work. We leave the sandblasting to you in your laboratory. The supports can be easily removed with pliers or a rotating tool. The majority of the added value and the individual processing remains with you.



Supports not grinded

We leave this extra layer on your work. If the work is not veneered with plastic, it should be grinded clean with a tungsten carbide burr. Please remember not to use the same burr for CoCr and titanium!



Supports grinded

The extra layer will be removed from us. In order not to jeopardize your occlusion in the case of fully anatomical design, occlusal surfaces are only very carefully grinded. We recommend these to be reworked in any case.



Titanium

S&S Scheftner Starbond Ti5



Indications

- Fully anatomical crown and bridge up to 16 units
- Crown and bridge up to 16 units for veneering
- Telescopic reconstruction
- Implant-supported superstructure
- Bar

Technical details

CTE (25 - 500 °C):	9,9 * 10 ⁻⁶ K ⁻¹
Modulus of elasticity:	115.000 MPa
Density:	4,5 g / cm ³
Yield point:	950 MPa
Tensile strenght:	1005 MPa
Elongation at break:	10 %

Composition in percent

Ti	90,0
Al	6,0
V	4,0
N, C, H, Fe, O	< 1,0



LaserMelting	file	
	grinded	not grinded
per unit	20,39 €	16,39 €
Retentions per two units	20,39 €	16,39 €
Attachment per two units	20,39 €	16,39 €
Services	file	
	grinded	not grinded
Standby ^{1,3}	-2,00 €	
OneDay ^{1,3}	-	+4,90 €
Goodwill insurance ^{1,3}	+0,99 €	
Additional weight ^{2,3}	+5,00 €	
Repair of file ^{1,3}	+5,00 €	
Elaboration of occlusal surface ³ (Additional expenditure: for occlusal surfaces, cut-back, etc.)	+7,50 €	-

¹ Explanation on pages 53 - 55

² Explanation on page 61

³ per unit



Cobalt-chrome (CoCr) / Titanium Partial framework (RPD)



LaserMelting CoCr (remanium® star)	file			
	elaborated and polished	grinded	grinded and unblasted	not grinded
Including clasps	125,50 €	114,50 €	111,50 €	85,50 €
Repair part basis	-	14,00 €	-	10,45 €
Repair part (each additional unit)		7,20 €	-	5,40 €
Retention grid		99,50 €	-	85,50 €
LaserMelting Titanium (Starbond Ti5)	file			
	elaborated and polished	grinded	not grinded	
Including clasps	227,50 €	178,50 €	149,50 €	
Repair part basis	-	20,85 €	17,30 €	
Repair part (each additional unit)		11,30 €	9,50 €	
Retention grid		163,50 €	149,50 €	
Services	file			
Express Service ¹	+34,00 €			
Goodwill insurance ¹	+9,99 €			
Goodwill insurance ¹ repair part	+4,99 €			
Additional weight ²	+5,00 €			

¹ Explanation on pages 53 - 55

² Explanation on page 61



Cobalt-chrome (CoCr) / Titanium Tertiary structure / Overdenture



LaserMelting CoCr (remanium® star)	file	
	grinded	not grinded
up to 6 units	57,25 €	42,72 €
from 7 units	114,50 €	85,50 €
Repair part basis	14,00 €	10,45 €
Repair part (each additional unit)	7,20 €	5,40 €
LaserMelting Titanium (Starbond Ti5)	file	
	grinded	not grinded
up to 6 units	89,25 €	74,75 €
from 7 units	178,50 €	149,50 €
Repair part basis	20,85 €	17,30 €
Repair part (each additional unit)	11,30 €	9,50 €
Services	file	
	grinded	not grinded
Express Service ¹	+34,00 €	
Goodwill insurance ¹ up to 6 units	+4,99 €	
Goodwill insurance ¹ from 7 units	+9,99 €	
Additional weight ²	+5,00 €	
Elaboration of occlusal surface ³ (Additional expenditure: for occlusal surfaces, cut-back, etc.)	+7,50 €	-

¹ Explanation on pages 53 - 55

² Explanation on page 57



Cobalt-chrome (CoCr) Orthodontics



Indications

- Herbst appliance
- Palatal expander
- Retainer
- Lingual bow / TPA
- Customized orthodontic appliances on request
- Band

LaserMelting CoCr (remanium® star)	file		
	elaborated and polished	grinded	not grinded
Band ring / arm per unit	16,99 €	9,99 €	5,99 €
Connecting element	49,98 €	29,99 €	19,99 €
Appliance / frame	98,98 €	78,99 €	49,99 €
Lingual bow / TPA incl. 2 band rings	84,98 €	64,99 €	39,99 €
Lingual bow / TPA each additional band ring	16,99 €	9,99 €	5,99 €
Retainer	49,98 €	29,99 €	19,99 €
Others	on request		
Services Band ring / arm	file		
Standby ^{1,2}	-0,50 €		
OneDay ^{1,2}	+4,90 €		
Goodwill insurance ^{1,2}	+0,49 €		
Services Connecting element / retainer	file		
Standby ¹	-2,00 €		
OneDay ¹ (retainer)	+7,50 €		
Express Service ¹ (connection element)	+20,00 €		
Goodwill insurance ¹	+1,99 €		
Services Appliance / frame / lingual bow / TPA	file		
Standby ¹	-7,00 €		
Express Service ¹	+34,00 €		
Goodwill insurance ¹	+9,99 €		

¹ Explanation on pages 53 - 55

² per unit



Retainer



Lingual bow



Palatal expander



Transpalatal arch (TPA)



Band



* We only manufacture semi-finished products. Do you have any more questions? Our customer service team will be glad to advise you!



Titanium Orthodontics



Indications

- Herbst appliance
- Palatal expander
- Retainer
- Lingual bow / TPA
- Customized orthodontic appliances on request
- Band

LaserMelting Titanium (Starbond Ti5)	file		
	elaborated and polished	grinded	not grinded
Band ring / arm per unit	21,99 €	14,99 €	9,99 €
Connecting element	82,99 €	43,99 €	33,99 €
Appliance / frame	156,99 €	117,99 €	88,00 €
Lingual bow / TPA incl. 2 band rings	131,99 €	92,99 €	67,99 €
Lingual bow / TPA each additional band ring	21,99 €	14,99 €	9,99 €
Retainer	82,99 €	43,99 €	33,99 €
Others	on request		
Services Band ring / arm	file		
Standby ^{1,2}	-1,00 €		
OneDay ^{1,2}	+4,90 €		
Goodwill insurance ^{1,2}	+0,99 €		
Services Connecting element / retainer	file		
Standby ¹	-2,00 €		
OneDay ¹ (retainer)	+7,50 €		
Express Service ¹ (connection element)	+20,00 €		
Goodwill insurance ¹	+1,99 €		
Services Appliance / frame / lingual bow / TPA	file		
Standby ¹	-7,00 €		
Express Service ¹	+34,00 €		
Goodwill insurance ¹	+9,99 €		

¹ Explanation on pages 53 - 55

² per unit



LASERMELTING



MILLING

Innovative process for highest precision

We combine the design potential of LaserMelting with the precision of milling technology. This enables us to manufacture sophisticated components such as secondary telescopes and implant

bars with the highest precision. This combination enables products with a perfect fit and outstanding surface quality - tailored to your requirements and with short delivery times.



Cobalt-chrome (CoCr) / Titanium HYBRID Production – secondary structures



i The maximum height for vertical insertion direction is 15 mm.

- For larger works, we recommend a connector thickness of at least 7 mm².
- Generate areas to be re-milled with a diameter of > 2.4 mm.
- Primary and secondary attachment and ready-made parts are not re-milled.
- Horix attachments and bindings which require recesses within millable areas cannot be realized in hybrid production.

Please note our separate parameter recommendations for Exocad and 3Shape.

LaserMelting CoCr (remanium® star)	file
	not grinded
Base price per unit	12,99 €
Retentions per two units	12,99 €
Attachment per two units	12,99 €
Secondary telescopic: re-milling per telescopic	29,49 €
Bar suprastructure: re-milling per unit	29,49 €
LaserMelting Titanium (Starbond Ti5)	file
	not grinded
Base price per unit	19,39 €
Retentions per two units	19,39 €
Attachment per two units	19,39 €
Secondary telescopic: re-milling per telescopic	29,49 €
Bar suprastructure: re-milling per unit	29,49 €



Cobalt-chrome (CoCr) / Titanium HYBRID Production Occlusal directly screw-retained works

Indications

- occlusal directly screw-retained bridges
- bars
- all-on-4, all-on-6, etc.

i Components leave the factory with separated supports and unblasted (= in annealing colors).



LaserMelting CoCr (remanium® star)	file
	not grinded
per implant connection (excl. screw)	94,50 €
compatible screw	12,50 €
LaserMelting Titan (Starbond Ti5)	file
	not grinded
per implant connection (excl. screw)	94,50 €
compatible screw	12,50 €



Available implant systems	diameter
CAMLOG®	3.3, 3.8, 4.3, 5.0/6.0
Dentsply Sirona® - Frialit 2	3.4, 3.8, 4.5, 5.5
Nobel Biocare® - Brånemark	3.5, 4.1, 5.1
Nobel Biocare® - Multi Unit	4.1/4.8, 6.0
Nobel Biocare® - NobelActive™	3.5, 4.3/5.0
Nobel Biocare® - NobelReplace®	3.5, 4.3, 5.0, 6.0
Straumann® - Bone Level	3.3, 4.1/4.8
Straumann® - synOcta®	4.8, 6.5
Zimmer Biomet 3i™ - Aussenhex (External)	3.4, 4.1, 5.0, 6.0
Zimmer Biomet 3i™ - Certain®	3.4, 4.1, 5.0, 6.0
Zimmer® Tapered Screw-Vent®	3.5, 4.5, 5.7



The maximum height for vertical insertion direction is 15 mm.

- For larger works, we recommend a connector thickness of at least 7 mm².
- Generate areas to be re-milled with a diameter of > 2.4 mm .

Please note our separate parameter recommendations for Exocad and 3Shape.



MILLING

Precision from the dental milling center

The multi-axis CAD / CAM-controlled, vibration-free, high-tech systems in our dental milling center achieve maximum reproduction accuracy for an enormous range of products. Whether customized

abutments, single crowns, bridge frameworks or telescopic crowns - we realize even the most complex products in short delivery times.



Zirconia multilayer

FAB Zirconia ML



Indications

- Partial / fully anatomical crown and bridge up to 16 units with maximum 2 pontics
- Crown and bridge up to 16 units for veneering
- Implant abutments
- Telescopic work and attachment
- Implant-supported superstructure

Technical details

CTE (25 - 500 °C): $10,5 \pm 0,5 \cdot 10^{-6} \text{ K}^{-1}$
 Flexural strength: 1050 MPa
 Translucency: 45 %

Parameters (bridge)

Margin thickness: 0,25 mm
 Wall thickness: 0,60 mm
 Connector section: 9 - 15 mm²

Colour

A1, A2, A3, A3.5, A4, B1, B2, B3, B4, C1, C2, C3, C4, D2, D3, D4 / all Vita colours



CADtools is now MINDFAB:
new name, same quality



Milling	file
per unit	36,99 €
Services	file
Standby ^{1,2}	-5,00 €
OneDay ^{1,2}	+7,50 €
Express Service ^{1,2}	+4,90 €
Goodwill insurance ^{1,2}	+2,99 €

¹ Explanation on pages 53 - 55

² per unit



Zirconia 3D

FAB Zirconia 3D ML



Indications

- Partial / fully anatomical crown and bridge up to 16 units with maximum 2 pontics
- Crown and bridge up to 16 units for veneering
- Implant abutments
- Telescopic work
- Implant-supported superstructure

Technical details

CTE (25 - 500 °C):	$10 \cdot 10^{-6} \text{ K}^{-1}$
Flexural strength:	typical mean value ca. 1100 MPa
Translucency:	41 - 49 %

Parameters (bridge)

Margin thickness:	0,25 mm
Wall thickness:	0,60 mm
Connector section:	9 - 15 mm ²

Colour

A1, A2, A3, A3.5, A4, B1, B2, B3, B4, C1, C2, C3, C4, D2, D3, D4, white / all Vita colours



CADtools is now MINDFAB: new name, same quality

The part in the blank that is responsible for stability is in the dentine-shaded area. Since 80 % of the bridge connectors should be positioned there, depending on the situation, there may be less incisal parts and thus an overall darker result in the restoration.

Our tip: Consider to select one shade lighter when working with a pronounced Spee curve, connectors at the level of the occlusal plane and restorations with a low overall height (up to 8 mm).

Processing instructions: We do not recommend the use of 3D zirconia for occlusally screw-retained bridges.

Milling	file
per unit	43,99 €
Services	file
Standby ^{1,2}	-5,00 €
Express Service ^{1,2}	+4,90 €
Goodwill insurance ^{1,2}	+3,99 €

¹ Explanation on pages 53 - 55

² per unit



Zirconia 3D

Ivoclar IPS e.max[®] ZirCAD Prime

Indications

- Partial / fully anatomical crown and bridge up to 16 units with maximum 2 pontics
- Crown and bridge up to 16 units for veneering
- Implant abutments
- Telescopic work
- Implant-supported superstructure

Technical details

CTE (25 - 500 °C):	10 * 10 ⁻⁶ K ⁻¹
Flexural strength:	750 - 1250 MPa
Translucency:	41 - 49 %

Parameters (bridge)

Margin thickness:	0,25 mm
Wall thickness:	0,60 mm
Connector section:	9 - 15 mm ²

Colour

A1, A2, A3, A3.5, A4, B1, B2, B3, B4, C1, C2, C3, C4, D2, D3, D4 / all Vita colours
BL1, BL2, BL3, BL4 / bleach colors

i The part in the blank that is responsible for stability is in the dentine-shaded area. Since 80 % of the bridge connectors should be positioned there, depending on the situation, there may be less incisal parts and thus an overall darker result in the restoration.

Our tip: Consider to select one shade lighter when working with a pronounced Spee curve, connectors at the level of the occlusal plane and restorations with a low overall height (up to 8 mm).

Processing instructions: We do not recommend the use of 3D zirconia for occlusally screw-retained bridges.

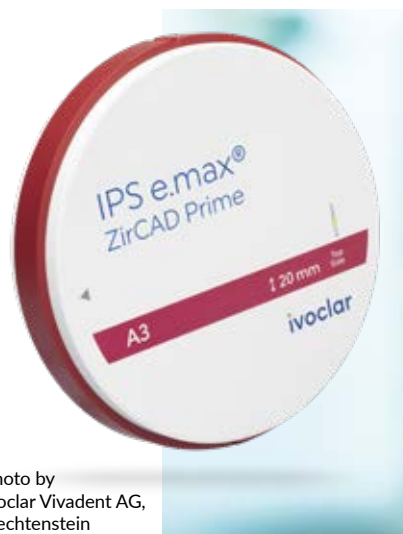


Photo by
Ivoclar Vivadent AG,
Liechtenstein

Milling	file
per unit	46,99 €
Services	file
Standby ^{1,2}	-5,00 €
Express Service ^{1,2}	+4,90 €
Goodwill insurance ^{1,2}	+3,99 €

¹ Explanation on pages 53 - 55

² per unit



Zirconia 3D

Ivoclar IPS e.max[®] ZirCAD Prime Esthetic

Indications

- Partial/fully anatomical crown and bridge up to 3 units with a maximum of one pontic
- Veneerable crown and bridge up to 3 units
- Telescopic work

Technical details

CTE (25 - 500 °C): 10,4 * 10⁻⁶ K⁻¹
 Flexural strength: 650 - 850 MPa
 Translucency: 45 - 49 %

Parameters (bridge)

Margin thickness: 0,25 mm
 Wall thickness: 0,60 mm
 Connector section: 9 - 15 mm²

Colour

A1, A2, A3, A3.5, A4, B1, B2, B3, B4, C1, C2, C3, C4, D2, D3, D4 / all Vita colours
 BL1, BL2, BL3, BL4 / bleach colors



We recommend placing the specified minimum connector cross-sectional area entirely in the dentin area of the blank. This begins 7 mm below the incisal surface of the blank.

Processing instructions: We do not recommend the use of 3D zirconia for occlusally screw-retained bridges.

Photo by Ivoclar Vivadent AG,
 Liechtenstein

Milling	file
per unit	46,99 €
Services	file
Standby ^{1,2}	-5,00 €
Express Service ^{1,2}	+4,90 €
Goodwill insurance ^{1,2}	+3,99 €

¹ Explanation on pages 53 - 55

² per unit



Zirconia 3D

Katana™ Zirconia YML

Indications

- Partial / fully anatomical crown and bridge up to 16 units with maximum 2 pontics
- Crown and bridge up to 16 units for veneering
- Implant abutments
- Telescopic work
- Implant-supported superstructure

Technical details

CTE (25 - 500 °C):	10 * 10 ⁻⁶ K ⁻¹
Flexural strength:	750 - 1250 MPa
Translucency:	45 - 49 %

Parameters (bridge)

Margin thickness:	0,25 mm
Wall thickness:	0,60 mm
Connector section:	9 - 15 mm ²

Colour

A1, A2, A3, A3.5, A4, B1, B2, B3, C1, C2, C3, D2, D3



The part in the blank that is responsible for stability is in the dentine-shaded area. Since 80 % of the bridge connectors should be positioned there, depending on the situation, there may be less incisal parts and thus an overall darker result in the restoration.

Our tip: Consider to select one shade lighter when working with a pronounced Spee curve, connectors at the level of the occlusal plane and restorations with a low overall height (up to 8 mm).

Processing instructions: We do not recommend the use of 3D zirconia for occlusally screw-retained bridges.



Milling	file
per unit	46,99 €
Services	file
Standby ^{1,2}	-5,00 €
OneDay ^{1,2}	+7,50 €
Express Service ^{1,2}	+4,90 €
Goodwill insurance ^{1,2}	+3,99 €

¹ Explanation on pages 53 - 55

² per unit



Zirconia translucent FAB Zirconia ST



Indications

- Partial / fully anatomical crown and bridge up to 16 units with maximum 2 pontics
- Crown and bridge up to 16 units for veneering
- Implant abutments
- Telescopic work and attachment
- Implant-supported superstructure

Technical details

CTE (25 - 500 °C): $10,5 \pm 0,5 \cdot 10^{-6} \text{ K}^{-1}$
 Flexural strength: 1050 MPa
 Translucency: 45 %

Parameters (bridge)

Margin thickness: 0,25 mm
 Wall thickness: 0,60 mm
 Connector section: 9 - 15 mm²

Colour

A1, A2, A3, A3.5, A4, B1, B2, B3, B4, C1, C2, C3, C4, D2, D3, D4 / all Vita colours



CADtools is now MINDFAB: new name, same quality

FAB Zirconia ST is a color-intensive framework material. For monolithic restorations, consider one shade lighter.



Milling	file
per unit	24,99 €
Services	file
Standby ^{1,2}	-5,00 €
OneDay ^{1,2}	+7,50 €
Express Service ^{1,2}	+4,90 €
Goodwill insurance ^{1,2}	+1,99 €

¹ Explanation on pages 53 - 55

² per unit



Zirconia translucent Ivoclar IPS e.max[®] ZirCAD LT

Indications

- Partial / fully anatomical crown and bridge up to 16 units with maximum 2 pontics
- Crown and bridge up to 16 units for veneering
- Implant abutments
- Telescopic work and attachment
- Implant-supported superstructure

Technical details

CTE (25 - 500 °C):	10,5 * 10 ⁻⁶ K ⁻¹
Flexural strength:	1200 MPa
Translucency:	41 %

Parameters (bridge)

Margin thickness:	0,25 mm
Wall thickness:	0,60 mm
Connector section:	9 - 15 mm ²

Colour

BL, A1, A2, A3, B1, B2, C2, D2, white



Photo by Ivoclar Vivadent AG,
Liechtenstein

Milling	file
per unit	26,49 €
Services	file
Standby ^{1,2}	-5,00 €
OneDay ^{1,2}	+7,50 €
Express Service ^{1,2}	+4,90 €
Goodwill insurance ^{1,2}	+1,99 €

¹ Explanation on pages 53 - 55

² per unit



Zirconia opaque

FAB Zirconia OP



Indications

- Partial anatomical crown and bridge up to 16 units with maximum 2 pontics
- Crown and bridge up to 16 units for veneering
- Implant abutments
- Telescopic work and attachment
- Implant-supported superstructure

Technical details

CTE (25 - 500 °C): $10 \cdot 10^{-6} \text{ K}^{-1}$
 Flexural strength: 1150 MPa
 Translucency: 35 %

Parameters (bridge)

Margin thickness: 0,25 mm
 Wall thickness: 0,60 mm
 Connector section: 9 - 15 mm²

Colour

Monochromatic blanks in group colours

OP 0: BL1, BL2, BL3, BL4
 OP 1: A1, A2, B1
 OP 2: B2, C1, D2
 OP 3: A3.5, A3, B3, B4, D3
 OP 4: A4, C2, C3, C4, D4



CADtools is now MINDFAB:
new name, same quality

Milling	file
per unit	24,99 €
Services	file
Standby ^{1,2}	-5,00 €
OneDay ^{1,2}	+7,50 €
Express Service ^{1,2}	+4,90 €
Goodwill insurance ^{1,2}	+1,99 €

¹ Explanation on pages 53 - 55

² per unit



Zirconia opaque

Ivoclar IPS e.max[®] ZirCAD MO

Indications

- Partial anatomical crown and bridge up to 16 units with maximum 2 pontics
- Crown and bridge up to 16 units for veneering
- Implant abutments
- Telescopic work and attachment
- Implant-supported superstructure

Technical details

CTE (25 - 500 °C):	10,5 * 10 ⁻⁶ K ⁻¹
Flexural strength:	1150 MPa
Translucency:	35 %

Parameters (bridge)

Margin thickness:	0,25 mm
Wall thickness:	0,60 mm
Connector section:	9 - 15 mm ²

Colour

Monochromatic blanks in group colours

MO 0:	BL1, BL2, BL3, BL4
MO 1:	A1, A2, B1
MO 2:	B2, C1, D2
MO 3:	A3.5, A3, B3, B4, D3
MO 4:	A4, C2, C3, C4, D4

Milling	file
per unit	26,49 €
Services	file
Standby ^{1,2}	-5,00 €
OneDay ^{1,2}	+7,50 €
Express Service ^{1,2}	+4,90 €
Goodwill insurance ^{1,2}	+1,99 €

¹ Explanation on pages 53 - 55

² per unit



Lithium disilicate

Ivoclar IPS e.max[®] CAD HT / MT / LT

Indications

- Crown and bridge up to 3 units
- Partial crown
- Inlay / Onlay
- Veneer

Technical details

CTE (25 - 500 °C): 10,1 * 10⁻⁶ K⁻¹
 Flexural strength: 530 MPa
 Crystallization temperature: 860 °C

Parameters (bridge)

Margin thickness: 0,40 mm
 Wall thickness: 0,60 mm
 Connector section: 9 - 16 mm²

Colour

HT / LT (1 unit): BL1, BL2, BL3, BL4, A1, A2, A3, A3.5, A4, B1, B2, B3, B4, C1, C2, C3, C4, D2, D3, D4, all Vita colours
 MT (1 unit): A1, A2, A3, B1, BL2, BL3, BL4
 LT (up to 3 units): A1, A2, A3, A3.5, B1, B2, C1, C2, D2



Delivery takes place in the white-violet colour characteristic of the material. The tooth colour only becomes visible through the crystallization firing.



Milling	file		
	HT	MT	LT
per unit	49,99 €	49,99 €	49,99 €
Bridge up to 3 units ²	-	-	59,99 €
Services	file		
	-5,00 €		
	+7,50 €		
	+4,90 €		
	+3,99 €		

¹ Explanation on pages 53 - 55

² per unit



Feldspar ceramic VITA VITABLOCS® TriLuxe



Indications

- Crown
- Partial crown
- Inlay / Onlay
- Veneer

Technical details

CTE (25 - 500 °C): $9,4 \cdot 10^{-6} \text{ K}^{-1}$
Flexural strength: $\pm 136 \text{ MPa}$

Parameters (crown)

Margin thickness: 0,40 mm
Wall thickness: 0,60 mm

Colour

1M2C (A1), 2M2C (A2), 3M2C (A3)



Milling	file
per unit	50,99 €
Services	file
Standby ^{1,2}	-5,00 €
OneDay ^{1,2}	+7,50 €
Express Service ^{1,2}	+4,90 €
Goodwill insurance ^{1,2}	+3,99 €

¹ Explanation on pages 53 - 55

² per unit



Composite (low filled) VITA CAD-Temp® multiColor



Indications

- Provisional up to 36 months
- Crown and bridge up to 16 units with a maximum of two pontics
- Splint

Technical details

Flexural strength:	> 80 MPa
Modulus of elasticity:	2800 MPa
Ceramic filler content:	ca. 14 %

Parameters (bridge)

Margin thickness:	0,15 mm
Wall thickness:	0,60 mm
Connector section:	9 - 12 mm ²

Colour

1M2T (A1), 2M2T (A2), 3M2T (A3)

Milling	file
per unit	29,99 €
Services	file
Standby ^{1,2}	-1,00 €
OneDay ^{1,2}	+7,50 €
Express Service ^{1,2}	+4,90 €
Goodwill insurance ^{1,2}	+0,99 €

¹ Explanation on pages 53 - 55

² per unit



Composite (high filled) VOCO Grandio disc multicolor



Indications

- Single crowns
- Implant-supported crowns
- Inlays/ Onlays/ Veneers

Technical details

Flexural strength:	>330 MPa (biaxial)
Modulus of elasticity:	18 GPa (similar to dentin)
Ceramic filler content:	86 % by weight

Colour

A1, A2, A3, A3.5, B1, C2



The multicolor shade imitates the color gradient of natural teeth.

Milling	file
per unit	53,99 €
Services	file
Standby ^{1,2}	-5,00 €
OneDay ^{1,2}	+7,50 €
Express Service ^{1,2}	+4,90 €
Goodwill insurance ^{1,2}	+3,99 €

¹ Explanation on pages 53 - 55

² per unit



Polymer FAB PMMA MO

Indications

- Provisional up to 36 months
- Crown and bridge up to 16 units with a maximum of two pontics
- Splint

Technical details

Density:	1,17 g / cm ³
Flexural strength:	120 MPa
Water absorption:	25 µg / mm
Modulus of elasticity:	2380 MPa

Parameters (bridge)

Margin thickness:	0,15 mm
Wall thickness:	0,60 mm
Connector section:	9 - 12 mm ²

Colour

All Vita colours



CADtools is now MINDFAB:
new name, same quality

Milling	file
per unit	9,99 €
Services	file
Standby ^{1,2}	-1,00 €
OneDay ^{1,2}	+4,90 €
Express Service ^{1,2}	+4,90 €
Goodwill insurance ^{1,2}	+0,99 €

¹ Explanation on pages 53 - 55

² per unit



Polymer FAB PMMA ML

Indications

- Provisional up to 36 months
- Crown and bridge up to 16 units with a maximum of two pontics
- Splint

Technical details

Density:	1,17 g / cm ³
Flexural strength:	120 MPa
Water absorption:	25 µg / mm
Modulus of elasticity:	2380 MPa

Parameters (bridge)

Margin thickness:	0,15 mm
Wall thickness:	0,60 mm
Connector section:	9 - 12 mm ²

Colour

A1, A2, A3, A3.5, A4, B1, B2, B3, B4, C1, C2, C3, C4, D2, D3, D4 / all Vita colours



CADtools is now MINDFAB:
new name, same quality

Milling	file
per unit	15,49 €
Services	file
Standby ^{1,2}	-1,00 €
OneDay ^{1,2}	+4,90 €
Express Service ^{1,2}	+4,90 €
Goodwill insurance ^{1,2}	+0,99 €

¹ Explanation on pages 53 - 55

² per unit



Polymer Whitepeaks CopraPeek



Indications

- Permanent wearing
- Crown and bridge up to 16 units with a maximum of one pontic
- Telescopic work
- Implant-supported superstructure

Technical details

Density:	1,46 - 1,55 g / cm ³
Flexural strength:	≥ 85 MPa
Modulus of elasticity:	≥ 3000 MPa

Parameters (bridge)

Margin thickness:	0,25 mm
Wall thickness:	0,60 mm
Connector section:	10 - 16 mm ²

Colour

White / opaque - other colours on request



Milling	file
per unit	36,99 €
including clasps	299,50 €
separately clasps	54,50 €
Services	file
Standby ^{1,2}	-2,00 €
Express Service ^{1,2}	+4,90 €
Goodwill insurance ^{1,2}	+2,99 €

¹ Explanation on pages 53 - 55

² per unit



Splint FAB PMMA CL

Technical details

Flexural strength:	> 120 MPa
Water absorption:	< 25 µg / mm
Modulus of elasticity:	2380 MPa

Colour

Crystal clear



CADtools is now MINDFAB:
new name, same quality



Milling	file
Crystal clear	49,99 €
Services	file
Standby ¹	-7,00 €
Express Service ¹	+20,00 €
Goodwill insurance ¹	+4,99 €

¹ Explanation on pages 53 - 55



Splint (slightly elastic) FAB Polyamide 12

Indications

- **Highly resistant and biocompatible**
- any splints incl. bleaching splints
- for strong bruxers
- good suitability for allergy sufferers since made of 100 % polyamide 12

Technical details

Density: ca. 1,0 g / cm³
 Flexural strength: 60 MPa
 Special feature: no bisphenol-A (BPA)
 no residual monomer
 no plasticizers

Parameters

Extremely thin (up to 0.2 mm) workability

Colour

Crystal clear



Milling	file
Crystal clear	76,99 €
Services	file
Express Service ¹	+20,00 €
Goodwill insurance ¹	+7,00 €

¹ Explanation on pages 53 - 55



Splint (thermoelastic) FAB MSI FX



Technical details

- extremely comfortable bruxism and temporomandibular joint splints
- mouthguard
- night guard

Technical details

Density:	ca. 1,1 g / cm ³
Flexural strength:	>20 MPa at room temperature / <20 MPa at oral temperature
Special feature:	high wearing comfort due to temperature-dependent flexibility and memory effect, special plaque resistance due to MSI technology

Parameters

Occlusal:	>0,9 mm
Labial:	>0,8 mm

Colour

transparent bluish



Milling	file
transparent bluish	89,99 €
Services	file
Express Service ¹	+20,00 €
Goodwill insurance ¹	+7,00 €

¹ Explanation on pages 53 - 55



Cobalt-chrome (CoCr) FAB Cobalt-Chrome T4



Indications

- Partial / fully anatomical crown and bridge up to 16 units
- Crown and bridge up to 16 units for veneering
- Implant-supported superstructure
- Telescopic reconstruction
- Bar

Technical details

CTE (20 - 500 °C):	14,1 * 10 ⁻⁶ K ⁻¹
Modulus of elasticity:	210 GPa
Density:	8,55 g / cm ³
Vickers hardness:	275 HV 10/30
Tensile strenght:	819 MPa
Yield point 0,2 %:	440 MPa

Composition in percent

Co	61,65
Cr	27,75
W	8,45
Si	1,61
Mn	0,25
Fe	0,20
Carbon-free	



CADtools is now MINDFAB:
new name, same quality

Milling	file
per unit	29,99 €
Services	file
Standby ^{1,2}	-2,00 €
OneDay ^{1,2}	+7,50 €
Express Service ^{1,2}	+4,90 €
Goodwill insurance ^{1,2}	+1,99 €

¹ Explanation on pages 53 - 55

² per unit



Titanium alloy

FAB Titanium G5

Indications	Parameters (bridge)
<ul style="list-style-type: none"> • Partial / fully anatomical crown and bridge up to 16 units • Crown and bridge up to 16 units for veneering • Implant-supported superstructure • Telescopic reconstruction • Bar 	Margin thickness: 0,10 mm Wall thickness: 0,40 mm Connector section: 7 mm ²
Technical details	Composition in percent
CTE (25 - 600 °C): 10,0 * 10 ⁻⁶ K ⁻¹ Modulus of elasticity: 114 GPa Density: 4,4 g / cm ³ Vickers hardness: 312 HV 10 Yield point 0,2 %: 880 MPa	Ti 90,0 Al 6,0 V 4,0 Fe < 1,0

i CADtools is now MINDFAB:
new name, same quality



Milling	file
per unit	36,39 €
Services	file
Standby ^{1,2}	-2,00 €
OneDay ^{1,2}	+7,50 €
Express Service ^{1,2}	+4,90 €
Goodwill insurance ^{1,2}	+1,99 €

¹ Explanation on pages 53 - 55

² per unit



Titanium / Cobalt-chrome (CoCr) Custom abutments

Requirement

- Open 3Shape, Exocad or Dentalwings scanner
- Abutment module in your scanner software
- CADdent abutment library
- CADdent scan bodies and screwdriver (available from us)
- Exclusive use of original model analogs

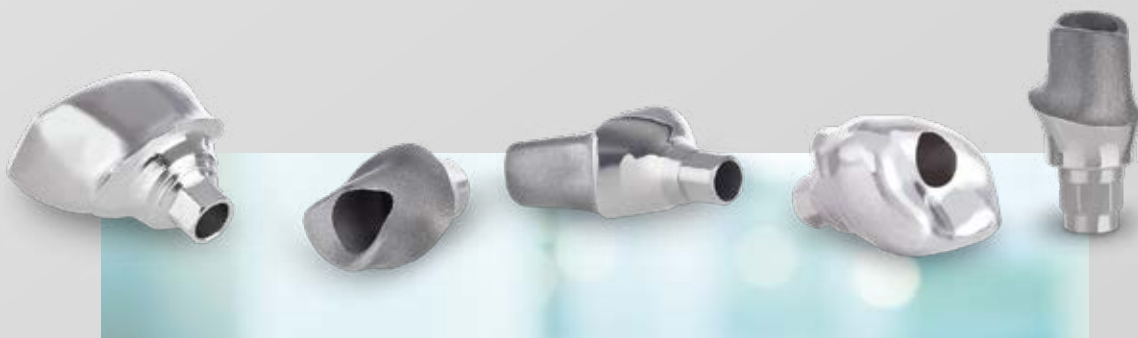
Milling Titanium	file
Custom abutment (incl. 1 screw)	67,50 €
Milling CoCr	file
Custom abutment (incl. 1 screw)	75,50 €
Services	file
Standby ^{1,2}	-2,00 €
Express Service ^{1,2}	+4,90 €
Goodwill insurance ^{1,2}	+3,99 €
Abutment accessories	file
Scan body / screwdriver	65,00 €
Additional screw	12,50 €

¹ Explanation on pages 53 - 55

² per unit



Implant system	Diameter	Customized titanium milled	Customized CoCr milled
CAMLOG®	3.3, 3.8, 4.3, 5.0/6.0	✓	–
Dentsply Sirona® - AstraTech OsseoSpeed® TX	3.5/4.0, 4.5/5.0	✓	✓
Dentsply Sirona® - Frialit 2	3.4, 3.8, 4.5, 5.5	✓	✓
Nobel Biocare® - Brånemark	3.5, 4.1, 5.1	✓	✓
Nobel Biocare® - Multi Unit	4.1/4.8, 6.0	✓	✓
Nobel Biocare® - NobelActive™	3.5, 4.3/5.0	✓	✓
Nobel Biocare® - NobelReplace®	3.5, 4.3, 5.0, 6.0	✓	✓
Straumann® - Bone Level	3.3, 4.1/4.8	✓	✓
Straumann® - synOcta®	4.8, 6.5	✓	✓
Zimmer Biomet 3i™ - Aussenhex (external)	3.4, 4.1, 5.0, 6.0	✓	✓
Zimmer Biomet 3i™ - Certain®	3.4, 4.1, 5.0, 6.0	✓	✓
Zimmer® Tapered Screw-Vent®	3.5, 4.5, 5.7	✓	✓





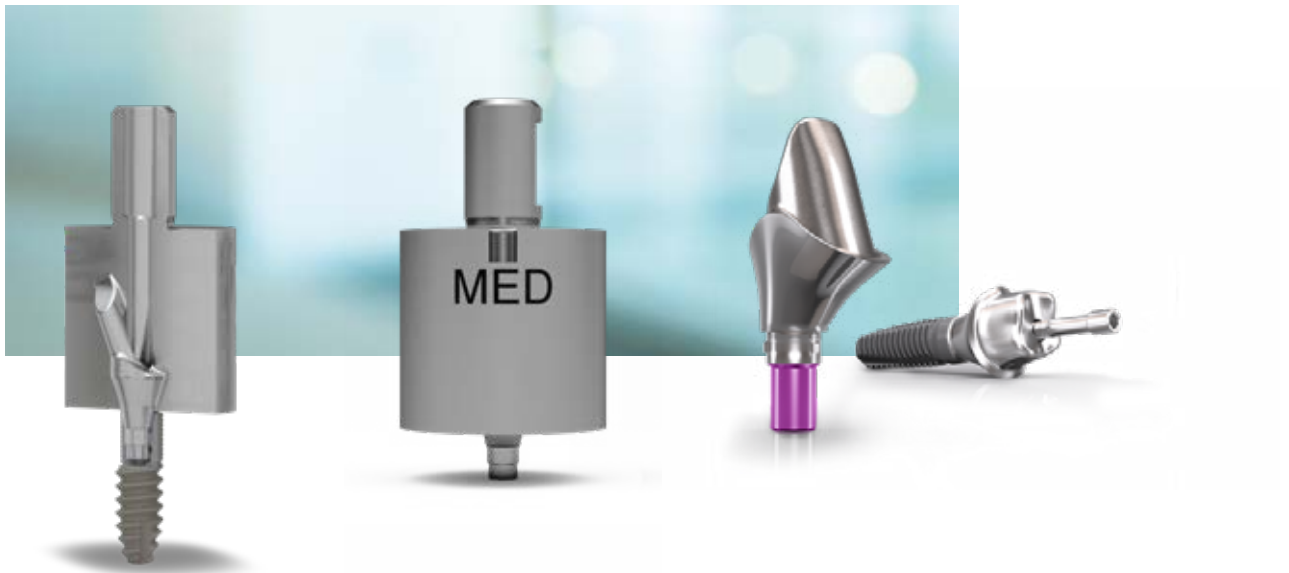
Titanium / Cobalt-chrome (CoCr) Original custom abutments

Requirement

- Open 3Shape, Exocad or Dentalwings scanner
- Abutment module in your scanner software
- Abutment library for original CAMLOG, CONELOG, iSy, Medentis ICX, Thommen and Zimmer systems
- Scanbody and screwdriver from the original manufacturer
- Exclusive use of original model analogs

Advantages

- Manufacturer's warranty on abutments
- Original abutment systems
- High-precision fit
- Medentis ICX: 2 screws included in the delivery
- Zimmer TSV: with patented Friction-Fit System
- For Biomet 3i Certain: with patented SureSeal™





Implant system	Diameter	Customized titanium milled	Customized CoCr milled	file
CAMLOG® (incl. 1 screw)	3.3, 3.8, 4.3, 5.0/6.0	✓	✓	109,00 €
CONELOG® (incl. 1 screw)	3.3, 3.8, 4.3, 5.0	✓	✓	109,00 €
iSy (incl. 1 screw)	3.8/4.4/5.0	✓	✓	109,00 €
Medentis ICX (incl. 2 screws)	ICX Standard	✓	✓	87,50 €
Thommen (incl. 1 screw)	3.5, 4.0, 4.5, 5.0, 6.0	✓	-	109,00 €
Zimmer Biomet 3i™ - Aussenhex External (incl. 1 screw)	3.5, 4.5, 5.7	✓	-	109,00 €
Zimmer Biomet 3i™ - Certain® (incl. 1 screw)	3.4, 4.1, 5.0, 6.0	✓	-	109,00 €
Zimmer® Tapered Screw-Vent® (incl. 1 screw)	4.1, 5.0, 6.0	✓	-	109,00 €
Services		file		
Standby ^{1,2}		-7,00 €		
OneDay ^{1,2}		+7,50 €		
Express Service ^{1,2}		+4,90 €		
Goodwill insurance ^{1,2}		+9,99 €		
Abutment accessories		file		
Scan body / screwdriver		37,00 €		
Additional screw		15,00 €		

¹ Explanation on pages 53 - 55

² per unit



Wax

FAB WAX XF

Indications

- Crown and bridge up to 16 units
- Any restorations for casting and pressing technology
- Try-in bodies up to a maximum height of 20 mm

Technical details

Density: 0,92 g / cm³
Melting point: 58 °C

Colour

Orange



Milling	file
Casting, pressing, overpressing technique	9,99 €
Services	file
Standby ^{1,2}	-1,00 €
OneDay ^{1,2}	+4,90 €
Express Service ^{1,2}	+4,90 €

¹ Explanation on pages 53 - 55

² per unit



Your partner for reliable CNC manufacturing – with materials from MINDFAB

As experienced specialists in dental CNC production, we at CADdent rely on the proven materials from MINDFAB. You have the option of using our manufacturing service or – if you mill yourself – you can use the MINDFAB CAD/CAM materials directly.

No matter which path you choose: with MINDFAB and CADdent, you can count on quality and reliability every step of the way.

Find out more!





3D-PRINTING

Our 3D printing – your plus offer:

With our systems we implement the most complex designs in 3D printing for the dental technology. Our equipment enables a wide variety of materials

as well as a wide range of sizes for numerous fields of application, from printed models to printed impression trays and casting 3D.



Resin Model / Impression tray



Indications

- Very precise manufacturing process with an accuracy in the hundredth of a millimeter range
- Stump models
- Master models
- Implant models
- Orthodontic models
- Models for aligners / splints



3D-printing Models for dentures ¹	file
Quadrant	11,99 €
Dental arch	14,99 €
Full arch	19,99 €
Gingival mask per unit	6,90 €
Each removable die	1,90 €
3D-printing Orthodontic models ¹	file
Quadrant	10,99 €
Dental arch	13,99 €
Full arch	18,99 €
3D-printing Impression tray	file
Customized impression tray	16,99 €
Services	file
Standby ²	-1,00 €
Express Service ²	+4,90 €

¹ Prices per jaw, models sawn or unsawn

² Explanation on pages 53 - 55



Polymer Surgical guide template

Color

Transparent



3D-printing	file
printed surgical guide template	69,99 €
sleeve per unit	39,99 €



Polymer Casting 3D



3D-printing	file
per unit	6,90 €
Service	file
Standby ^{1,2}	-2,00 €
Goodwill insurance ^{1,2}	+0,49 €
OneDay ^{1,2}	+4,90 €



3D-printing Partial framework	file
including clasps	49,90 €
Repair part basis	6,10 €
Repair part each additional unit	3,20 €
3D-printing Tertiary structure	file
up to 6 units	24,95 €
from 7 units	49,90 €
Repair part basis	6,10 €
Repair part each additional unit	3,20 €
Services	file
Express Service ¹	+20,00 €
Goodwill insurance ¹	+3,99 €

¹ Explanation on pages 53 - 55



SERVICE



Customer orientation as a philosophy

We focus on you. As a long-term partner for the protagonists in this world, we tailor our service performances 100 percent to your needs. Dental technology is an area that lives from individual solutions. No dentition is like the other, every dentist has his own ideas and every dental technician has

his own signature that defines the quality of the laboratory. Customer orientation is therefore our engine, customer satisfaction is our top priority. Our daily mission is to work on the quality of our products and services.



Service options

Standby	Requirement
Standby means that you benefit from an unbeatable price and leave us an additional working day of production time.	<ul style="list-style-type: none"> for all materials (except HYBRID production) only by delivery of design file, intraoral scan or model scan Important: Your works will be dispatched Monday - Friday. On Saturday Standby is not dispatched.

OneDay	Requirement
Selecting this option your order will be dispatched the same day, if the following requirements are met:	<p>LaserMelting (cobalt-chrome (CoCr) / titanium) not grinded</p> <ul style="list-style-type: none"> Single crown / bridge / bar / coping / band / arm / retainer Deadline of files Mo. - Fr. by 9:00 a.m. <p>Milling (cobalt-chrome (CoCr) / titanium)</p> <ul style="list-style-type: none"> Single coping / bridge up to 5 units / secondary telescopic (not on implant) Deadline of files Mo. - Fr. by 12:00 a.m. <p>Milling (Zirconia Ivoclar Translucent + MO / Katana YML / FAB Zirconia MO + ST + ML / lithium disilicate / feldspar ceramic / composite for all materials)</p> <ul style="list-style-type: none"> Single coping / bridge up to 3 units Deadline of files Mo. - Fr. by 9:00 a.m. <p>Milling (VOCO Multicolor)</p> <ul style="list-style-type: none"> Single coping Deadline of files Mo. - Fr. by 12:00 a.m. <p>Milling (FAB PMMA MO + ML / Vita CAD-Temp multicolor / FAB MSI FX)</p> <ul style="list-style-type: none"> Single coping / bridge up to 16 units Deadline of files Mo. - Fr. by 9:00 a.m. <p>3D-Printing (Casting 3D)</p> <ul style="list-style-type: none"> Single coping / bridge up to 16 units Deadline of files Mo. - Fr. by 9:00 a.m. <p>Custom abutments</p> <ul style="list-style-type: none"> Original Deadline of files Mo. - Fr. by 12:00 a.m.



Service options

Express Service LaserMelting / milling / 3D-printing

For urgent orders received after the file time limit which should be produced immediately.
We require a priori telephone consultation for availability.

Repair of file

On request if, for example, structures are not optimized for the production in LaserMelting or 3D-printing.

Scan / Design service

Auf Basis Ihres eingeschickten Modells oder übermittelten Scandaten (Intraoralscan oder Modellscan) erstellen unsere erfahrenen CAD-Spezialisten Ihre Wunschkonstruktion und setzen diese im entsprechenden Material um.

Help us out!

Help us protect the environment and send us the gray plastic boxes back for recycling!
We will thank you for your commitment and shipping costs with a credit note for € 0.20 per box.





Service options

Goodwill insurance	Requirement
<p>Insure your work against impression errors and inconveniences with this all-round carefree package: in the event of damage, we will produce the affected structure again.</p> <p>The goodwill insurance applies in the following cases:</p> <ul style="list-style-type: none">- mistake in the impression from your dentist- design errors- wrong color choice- accidental damage in your laboratory, etc.	<ul style="list-style-type: none">• only by delivery of file• the design lies within the indication• the work is newly commissioned• the newly commissioned work is in the same material• the goodwill notification takes place within one year, for splints within one month• you send us the affected work back <p>The credit note will be issued as soon as we have the damaged work in our center.</p> <p>Errors by shipping service providers and special services which have been ordered and carried out without warranty are excluded.</p> <p>Refunds via goodwill insurance are up to max. 3.5 % of total net sales possible (sales from delivery of files for the respective financial year).</p>



Do you need samples for allergy or material tests? Call us, we will be glad to help you!



Production times / Data delivery

LaserMelting CoCr / Titan ⁴	Deadline			Shipment ²
	Mo. - Do.	Fr.	Sa. ¹	
Crown / bridge / etc.	6 p.m.	4 p.m.	11 a.m.	next working day
Crown / bridge / etc. Degudent / Sirona / Etkon format	5 p.m.	3 p.m.	11 a.m.	next working day
Partial framework / tertiary structure File acceptance depends on production capacity. Please note: once reached, the delivery time will be longer.	1 p.m.	1 p.m.	11 a.m.	next working day
Band / arm (orthodontics) (grinded, not grinded)	6 p.m.	4 p.m.	11 a.m.	next working day
Band / arm (orthodontics) (finished and polished)	6 p.m.	4 p.m.	11 a.m.	next working day
Connecting element / appliance / frame / lingual bow / TPA / retainer File acceptance depends on production capacity. Please note: once reached, the delivery time will be longer.	1 p.m.	1 p.m.	11 a.m.	next working day
Service	Shipment ²			
Standby ³	plus 1 working day			
OneDay ³	same working day			
Express Service ³ LaserMelting (partial framework / tertiary structure)	next working day			
LaserMelting / Milling HYBRID Production ⁴	Deadline			Shipment ²
	Mo. - Do.	Fr.	Sa. ¹	
Secondary telescopic	1 p.m.	1 p.m.	-	third working day
Occlusal directly screw-retained works	1 p.m.	1 p.m.	-	third working day

¹ Only correct STL files will be produced, as there is no telephone customer service.

² Standard delivery time; except peak / rush hours. In this case a later delivery may occur.

³ Please refer to the service overview of the product to find out whether the respective service is available as an option.

⁴ No production on Saturdays.



Production times / Data delivery

Milling CoCr / titanium	Deadline			Shipment ²
	Mo. - Do.	Fr.	Sa. ¹	
Crown / bridge / etc. up to 5 units	4 p.m.	2 p.m.	11 a.m.	next working day
Crown / bridge / etc. up to 5 units and in peak hours	4 p.m.	2 p.m.	11 a.m.	second working day
Custom abutments / implant-supported works	2 p.m.	2 p.m.	-	next working day
Milling Zirconia	Deadline			Shipment ²
	Mo. - Do.	Fr.	Sa. ¹	
Crown / bridge / etc. up to 5 units	4 p.m.	2 p.m.	11 a.m.	next working day
Crown / bridge / etc. up to 5 units and in peak hours	4 p.m.	2 p.m.	11 a.m.	second working day
Milling Lithium disilicate / feldspar ceramic / composite	Deadline			Shipment ²
	Mo. - Do.	Fr.	Sa. ¹	
Crown / bridge / etc.	4 p.m.	2 p.m.	11 a.m.	next working day
Milling Plastics / wax	Deadline			Shipment ²
	Mo. - Do.	Fr.	Sa. ¹	
Crown / bridge / etc.	4 p.m.	2 p.m.	11 a.m.	next working day
Partial framework PEEK	4 p.m.	3 p.m.	11 a.m.	second working day
Splint	4 p.m.	2 p.m.	11 a.m.	second working day
Service	Shipment ²			
Standby ³	plus 1 working day			
OneDay ³	same working day			
Express Service ³ milling technology	next working day			

¹ Only correct STL files will be produced, as there is no telephone customer service.

² Standard delivery time; except peak / rush hours. In this case a later delivery may occur.

³ Please refer to the service overview of the product to find out whether the respective service is available as an option.



Production times / Data delivery

3D-printing	Deadline			Shipment ²
	Mo. - Do.	Fr.	Sa. ¹	
Model / impression tray	2 p.m.	2 p.m.	-	next working day
Implant model	2 p.m.	2 p.m.	-	next working day
Drilling template	2 p.m.	2 p.m.	-	next working day
3D-Druck Casting 3D	Deadline			Shipment ²
	Mo. - Do.	Fr.	Sa. ¹	
Crown / bridge / etc.	2 p.m.	2 p.m.	-	next working day
Partial framework (RPD) / tertiary structure	2 p.m.	2 p.m.	-	next working day
Service	Shipment2 ²			
Standby ³	plus 1 working day			
Express Service ³ 3D-printing	next working day			

¹ Only correct STL files will be produced, as there is no telephone customer service.

² Standard delivery time; except peak / rush hours. In this case a later delivery may occur.

³ Please refer to the service overview of the product to find out whether the respective service is available as an option.

Production times diagram

Outgoing order 1st working day with OneDay



continue on page 57

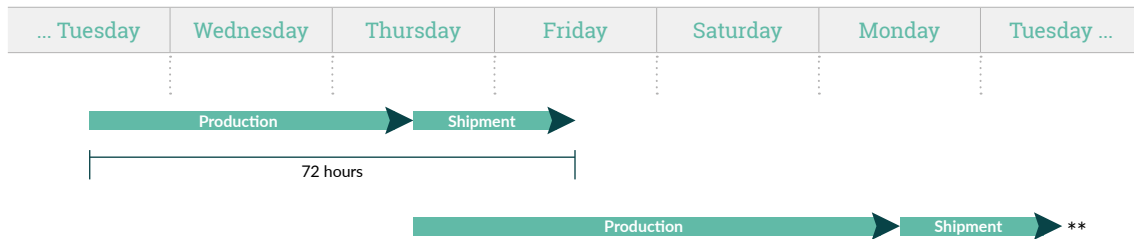


continued from page 56

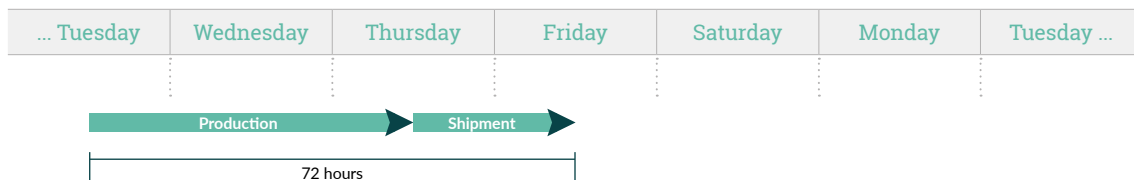
Outgoing order 1st working day



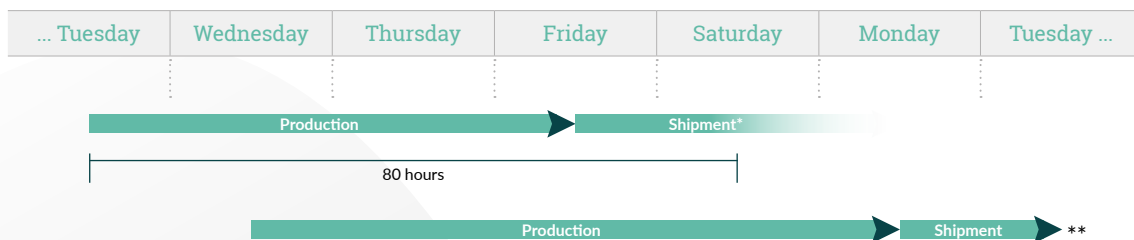
Outgoing order 1st working day with Standby



Outgoing order 2nd working day



Outgoing order 2nd working day with Standby



** No Standby shipping on Saturdays



Shipment

Shipment outside Germany ¹	Delivery	file
DHL Express - End of Day ca. 18:00 h	Mo. - Fr.	depending on destination country
DHL Express - 13:00 h ²	Mo. - Fr.	
DHL Saturday delivery ²	Sa.	

¹ Please consider that delivery may occur in 24 - 72 hours, according on the country and region your laboratory is located and custom procedures, if needed.

² Option available only in some areas of the national territory. Contact our customer service team to check if the option is available in your municipality.



Payment options / Further information

Payment options

Term of payment for precious metal:
5 (five) working days after the date of shipment, exclusively via SEPA direct debit mandate.
For precious metal orders no discount or special prices on volume will be granted.
They do not count in the monthly total sales.

Term of payment (valid for all works except precious metal):
10 days netto.

Grant us a direct debit authorization and you will receive 2 % cash discount on the invoice amount.
Debiting will be effected every 10th of the following month.

From € 4,000.00 net sales per month, we grant you a 5 % volume discount.
Except for vouchers and LaserFlat rates.

Additional weight

For extra weight in the LaserMelting process every further gram will be surcharged.

Requirement

- per unit over 2 g (> 230 mm³)
- partial framework / tertiary structure over 20 g (> 2300 mm³)

CADdent® GmbH
Max-Josef-Metzger-Str. 6 | 86157 Augsburg

Phone: +49 821 5999965-0
E-mail: uk@caddent.eu

from technician to technician

W W W . C A D D E N T . E U